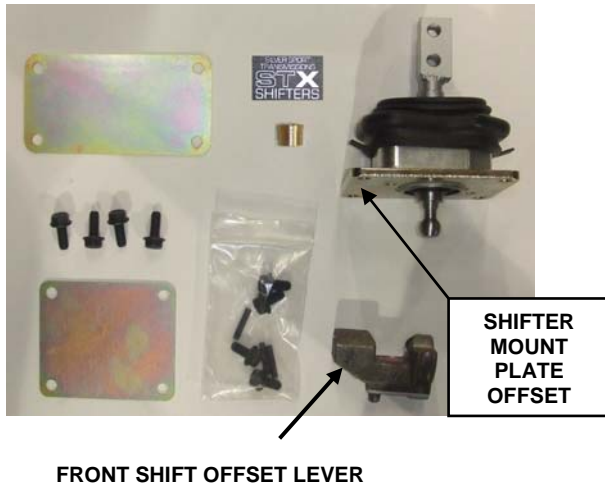


SILVER SPORT

Transmissions

T56 Transmission Front Shift Kit Installation Instructions

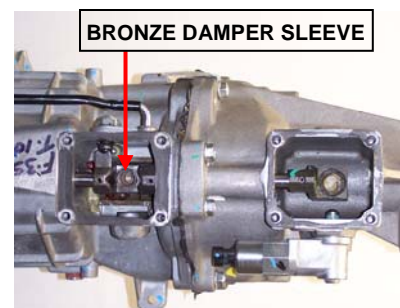
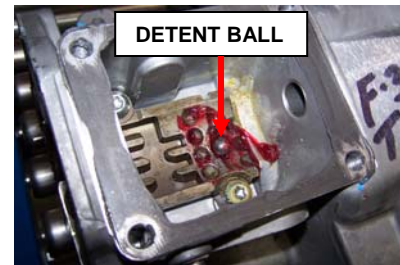
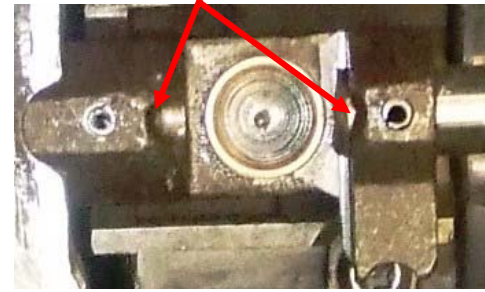


- 1) Remove (4) bolts from rear shifter and pry the shifter off the transmission. The shifter and bolts may be discarded.
- 2) Drive the 3/16" roll pin through the bottom of the rear offset lever and remove lever. If you are going to utilize the electronic reverse lockout feature, retain the rear offset lever and roll pin for re-assembly.
- 3) Remove (4) bolts from the front access plate, pry plate off the transmission and discard the bolts.
- 4) Drive the 3/16" roll pin through the bottom of the front offset lever.
- 5) Disassemble transmission to remove the top shift rail, following the factory TTC Service Manual available as a free download at: TTCAutomotive.com/Products & Services/Product Literature/T56 Service Manual TRSM-T56-0711
- 6) Discard the factory front offset lever, but save the detent ball, pin and spring.

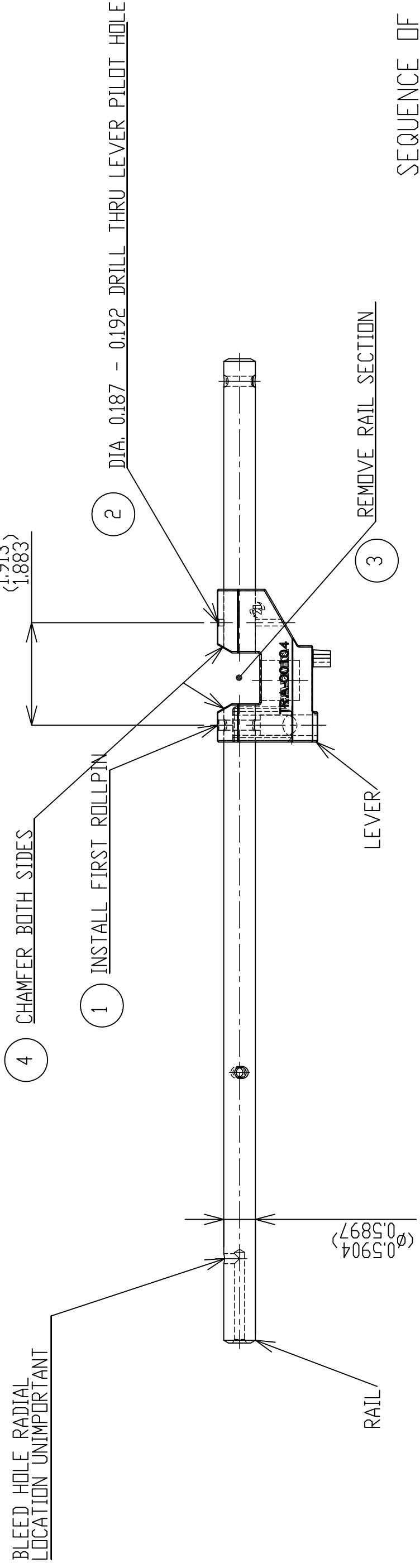


- 7) Modify the top shift rail as per the included Rail Modification drawing instructions TRA-00111. Make sure the rail ends in the offset lever are contoured to match the offset lever.
- 8) Partially reassemble transmission and install front section of the modified shift rail asm.
- 9) Install the detent spring from Step 6 into the new front shift offset lever and install the detent ball.
- 10) Set the main case into position over the output shaft and countershaft, and let it rest on top of the dowels, about an inch away from the transmission front adapter.
- 11) Install the new front shift offset lever onto the front shift rail and secure with one of the supplied new 3/16" roll pins.
- 12) Insert the rear section of the modified top shift rail into the lever and secure with the other 3/16" roll pin.
- 13) Complete the assembly of the T56 Extension components and housing.
- 14) Install the supplied bronze damper sleeve into the new front shift offset lever using Loctite #635 (green). Allow to dry overnight before continuing assembly. Apply a bead of gasket sealant around the front shift opening on the transmission. Lightly lubricate the shifter stub ball with grease.
- 15) Install the new shifter assembly to the transmission using the (4) longer bolts supplied with kit and torque to 11-18 lb.-ft.
NOTE: Be sure to install the shifter assembly with the shifter mount plate offset positioned towards the front of the transmission (see photo on page 1).
- 16) If you plan on connecting the electronic reverse lockout solenoid, reinstall the original rear offset lever and secure with the original 3/16" x 1" roll pin.
- 17) There are two different sized rear shifter opening cover plates included in your kit. Select the appropriate size cover for your transmission. Apply a bead of gasket sealant around the shifter opening on the transmission, and install the new rear cover using the shorter bolts supplied with kit. If desired, affix the "STX" shifter badge to the cover plate.

GRIND SHIFT RAIL ENDS TO MATCH SHAPE OF OFFSET LEVER

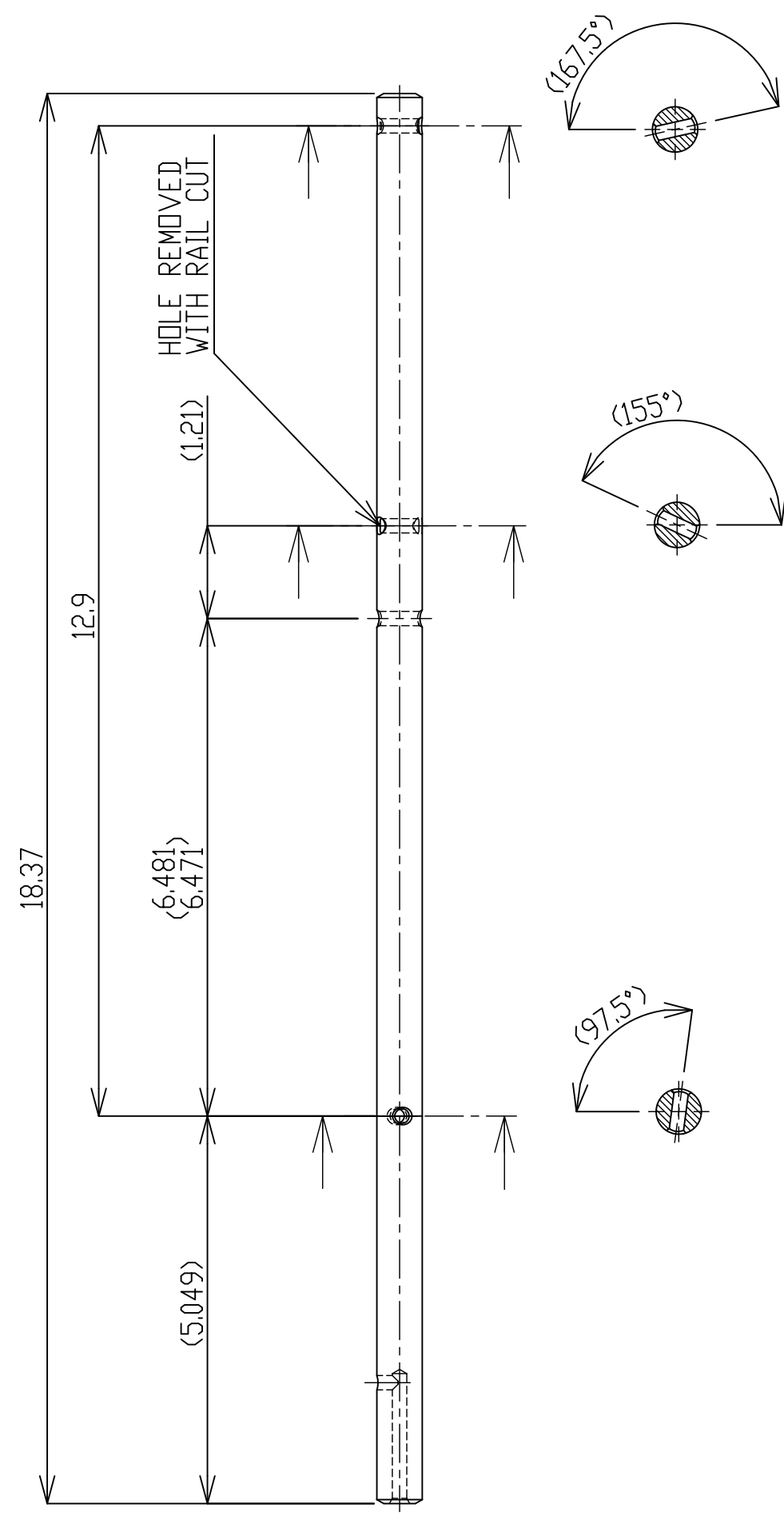


REV.	DESCRIPTION	DATE	DRAWN
A	REVISED & REDRAWN	9/18/2007	JLF
B	REDRAWN W/O REVISION	05/21/2014	EDF
C	ADDED NEW STEP 5	12/29/2014	EDF
D	REMOVED STEP 5	2/4/2019	BAV
E	ADDED REV C STEP 5; REVISE STEP 6	3/4/2019	DM



SEQUENCE OF MODIFICATION:

1. PIN LEVER TO RAIL WITH 3/16 ROLL PIN AS SHOWN.
2. DRILL THRU LEVER PILOT HOLE AND RAIL FOR 3/16 ROLL PIN. CARBIDE DRILL BIT MUST BE USED TO DRILL HOLE THRU HARDENED STEEL SHIFT RAIL. REMOVE FIRST ROLLPIN AND LEVER FROM RAIL.
3. CUT RAIL AND REMOVE SECTION AS SHOWN.
4. TRIM AND CHAMFER BOTH RAIL END CUTS TO MATCH CONTOURS OF LEVER.
5. INSTALL BRONZE SHIFT CUP INTO OFFSET LEVER USING LOCTITE RETAINING COMPOUND #635 (GREEN). ALLOW TO DRY 24 HRS BEFORE CONTINUING ASSEMBLY OF TRANSMISSION.
6. INSTALL BOTH ROLLPINS, LEVER, AND SHIFT RAIL PIECES DURING FINAL ASSEMBLY OF TRANSMISSION. SEE INSTALLATION INSTRUCTION MANUAL MAA-00601 FOR DETAILED STEP BY STEP ASSEMBLY PROCEDURE.



RAIL WITH HOLE POSITIONS BEFORE MODIFICATIONS

APPLICATION	RAIL	LEVER	DIM "A"	DIM "B"
LT (-016)	1386-100-007	TRA-00113	22.28	16.81
LS (-020,-017)	1386-100-007	TRA-00113	22.28	16.81
A/M (-011)	1386-100-012	TRA-00113	19.54	14.06
VIPER (-018,-2062)	1386-100-008	TRA-00113	18.38	12.89

ITEM	PART NO.	DESCRIPTION	QTY
LEVER	TRA-00113	OFFSET LEVER	1
RAIL	T56 RAIL	SHIFT RAIL	1

REVISION	DATE	BY	DESCRIPTION
C	9/17/07	JLF	RAIL MODIFICATIONS

SIZE	DWG. NO.	REV.
C	TRA-00111	E

SCALE	SHEET	1 OF 1
1:1	11	1 OF 1